



**Furniture & Appliance
 Legs — Adjustable Metal**

IEC's *adjustable metal legs* are available in matte nickel (-MN), stainless steel (-SS), chrome (-CHR) and black epoxy finish (-BLK).

IL635, IL638 and IL639 have 1" of adjustment. IL636 and IL637 have 1-3/4" adjustment.

IL635 thru IL640 have a 1000 lb load rating and are NSF certified. IL641 has a 500 lb load rating.



METAL — ADJUSTABLE LEGS

P/N	LEG HEIGHT	THREAD/ PLATE SZ.	WEIGHT (LB)
IL635X4-6X38-MN	4	3/8-16X3/8	.75

Adjustment = 1"

METAL — ADJUSTABLE LEGS

P/N	LEG HEIGHT	THREAD/ PLATE SZ.	WEIGHT (LB)
IL636X4-7X75-SS	4	1/2-13X3/4	.75
IL636X6-7X75-SS	6	1/2-13X3/4	1.0

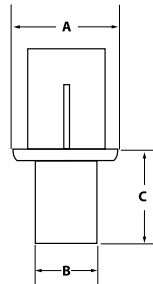
Adjustment = 1-3/4"

**Stainless Steel Tubing Feet
 with Adjustable Legs**

These round and square stainless steel tubing feet are made to fit 16-18 ga tubing. The foot has hex flats and can be raised 1-1/8" inches from the minimum height shown ("C" dimension). The housing that fits inside the tube is zinc die cast (Zamak). The foot is clad with 304 SS. NSF certified.

IL636-PLT (shown below)

The plate for the IL636 foot is a 3-1/2" (89 mm) SQUARE STEEL PLATE, 1/8" THICK, GALVANIZED, WITH 1/2-13 THREADED CENTER HOLE, 4 CORNER HOLES, 5/16" DIA, SPACED 67 MM (2-5/8") apart. This plate is included when ordering the IL637 legs.



ROUND & SQUARE SS TUBING FEET

P/N	A	B	C
IL27-636-RD-SS	1-1/2	1-1/8	1-1/2
IL27B2-636-RD-SS	1-5/8	1-1/8	1-1/2
IL27A-636-RD-SS	2	1-9/16	1-1/2
IL27-636-SQ-SS	1-1/2	1-1/8	1-1/2
IL27B2-636-SQ-SS	1-5/8	1-1/8	1-1/2
IL27A-636-SQ-SS	2	1-9/16	1-1/2

METAL — ADJUSTABLE LEGS

P/N	LEG HEIGHT	THREAD/ PLATE SZ.	WEIGHT (LB)
IL637X4-SS	4	3-1/2 SQ	.75
IL637X6-SS	6	3-1/2 SQ	1.0

Adjustment = 1-3/4". Stainless steel leg is 1-5/8" diameter. Adjustable foot is 1-1/4" diameter with 6 wrench flats. Also available with 2" diameter shell.



**Furniture & Appliance
 Legs — Adjustable Metal**

IEC's *adjustable metal legs* are available in matte nickel (-MN), stainless steel (-SS), chrome (-CHR) and black epoxy finish (-BLK).

IL635, IL638 and IL639 have 1" of adjustment. IL636 and IL637 have 1-3/4" adjustment.

IL635 thru IL640 have a 1000 lb load rating and are NSF certified. IL641 has a 500 lb load rating.

IL640 is available in black plastic or nickel finish. It has 1" of adjustment.

IL641 has a 3/8-16 thread. It comes with a nylon base threaded glide which provides 1-1/4" of height adjustment. You can also choose a different threaded leveler or caster for this leg. Load rating, 500 lbs. or less.



METAL — ADJUSTABLE LEGS

P/N	LEG HEIGHT	THREAD/ PLATE SZ.	WEIGHT (LB)
IL638X4-SS	4	3-1/2 SQ	.75
IL638X6-SS	6	3-1/2 SQ	1.0

Adjustment = 1"



METAL — ADJUSTABLE LEGS

P/N	LEG HEIGHT	THREAD/ PLATE SZ.	WEIGHT (LB)
IL638X6-BLK	6	3-1/2 SQ	1.0

Adjustment = 1"



METAL — ADJUSTABLE LEGS

P/N	LEG HEIGHT	THREAD/ PLATE SZ.	WEIGHT (LB)
IL639X4-6x75-SS	4	3/8-16x3/4	1.0
IL639X6-7x75-SS	6	1/2-13x3/4	1.5
IL639X6-8x75-SS	6	5/8-11x3/4	1.5
IL639X6-9x75-SS	6	3/4-10x3/4	1.5

Adjustment = 1"



METAL — ADJUSTABLE LEGS

P/N	LEG HEIGHT	THREAD/ PLATE SZ.	WEIGHT (LB)
IL640X4-6x1/2-BLK	4	3/8-16x1/2	.5
IL640X4-6x1/2-NKL	4	3/8-16x1/2	.5

Adjustment = 1"



**Furniture & Appliance
 Legs — Plastic**

These *plastic legs* are made of black nylon or brown polyethylene (100 lb load rating).

All have a 100 lb load rating.



PLASTIC — FURNITURE AND APPLIANCE LEGS

P/N	LEG HT.	THREAD/ PLATE SZ.	WEIGHT (LB)
IL651X275-51-BLK	2-3/4	5/16-18 X 1	.20
IL651X35-51-BLK	3-1/2	5/16-18X1	.25

Top diameter of leg is 2".



PLASTIC — FURNITURE AND APPLIANCE LEGS

P/N	LEG HT.	THREAD/ PLATE SZ.	WEIGHT (LB)
IL652X3-51-BRN	3	5/16-18 X 1	.20
IL652X5-51-BRN	5	5/16-18X1	.25

Top diameter of leg is 2".